

WEBINAR EVENT

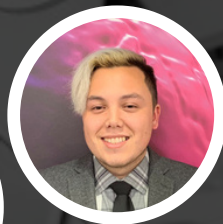
YOUR MIC IS MUTED:

HOW NEW GRADS ARE NAVIGATING THE JOB MARKET DURING COVID-19

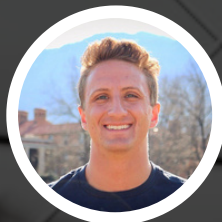
Sahiti Gajjala - SF
Validation Engineer
CAI



Jeremy Garibay - LA
PD Process Engineer
Instil Bio



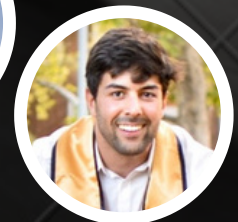
Maria Rivera - LA
Testing Senior Associate
Amgen



Nick Monteleone
Moderator
Automation Engineer
BioMarin



Alex Pell - SF
Technical Development
Research Assistant
Genentech



Simon Coelho - SF
Software Engineer
BioNex

APRIL 14, 2021 | 5:30 - 7:00 PM PST

[CLICK HERE TO REGISTER!](#)

Hosted by ISPE
Emerging Leaders
(formerly YP) of CA





ISPE®

San Francisco |
Bay Area Chapter

ISPE San Francisco/Bay Area Chapter

<http://www.atdevents.net/register.php>

ISPE California Chapters Present

Your Mic is Muted

How New Grads Are Navigating the Job Market During COVID-19

A Complimentary Virtual Event For Emerging Leaders

Registration Instructions

Sponsorships Available \$250:

Your sponsorship includes your logo on email promotions and event flyers and a link for your employees to join the webinar at no additional cost. You have the option of providing a promotional video of up to 30 seconds to be played during the webinar. You will also receive a link to view the webinar recording after the event and any handouts approved for distribution from the speakers. This information can be shared with your staff after the webinars.

Please note that our system does not email confirmations for complimentary events, however, you will receive a link to join the day before the webinar.

- 1) Click on the link then log on using your username and password: <http://www.atdevents.net/register.php>
- 2) Click on the appropriate event. Here is where you can download the event flyer also.
- 3) Scroll through the list of registration options and find the one that applies to you then complete the registration. Our site does not send confirmation emails for complimentary events, however, the link to join the webinar will be emailed to you the day before the webinar.

ISPE California Chapter Members:

If you are an ISPE Member in California, please do not set up a new account, as you should already be in our system (takes a few days after joining). You will need your username and password to log on.

How To Find Your ISPE Member Number or Update Your Account to a Member Account:

To update your existing account to a Member account, or to add your new ISPE Member account to our website, please forward your confirmation email from ISPE or your ISPE Membership information to Rob Fleming (rob.fleming@yahoo.com). We need your Chapter name, your ISPE Member number and expiration date. To retrieve this information, log onto the ISPE website. Click on "Account" on the top right side, then "My Account". Your Membership information (not including your chapter affiliation) is on the left side. Please take a screen shot or make a pdf of the page, then email it along with the name of your chapter to Rob Fleming to update your profile on the atdevents.net site.

ISPE Members of Other Chapters:

You will not be in our system unless you have previously set up an account. Please follow instructions for Non Members below then follow the instructions to update your account to a member account (see above).

Non Members:

If you do not have an account, you can set one up on the site using letters (not numbers) as your username.

HELP: Please email Rob Fleming (rob.fleming@yahoo.com) for assistance with registration.

ISPE San Francisco Chapter

5319 University Dr., Suite 641, Irvine, CA 92612

Tel: 949-387-9046

Chapter Tax ID #68-0282494